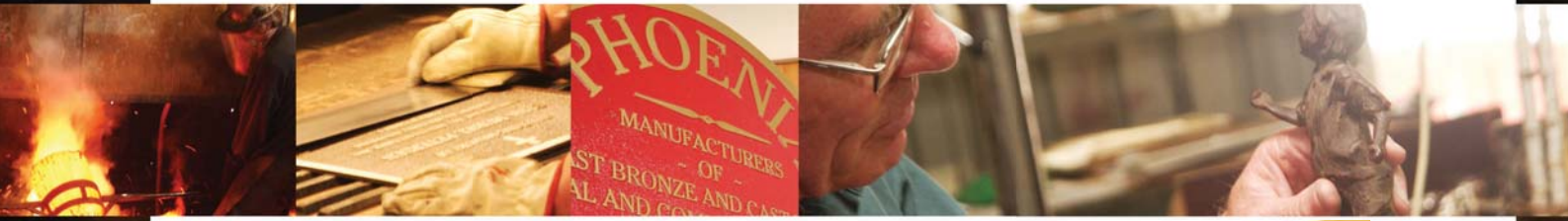
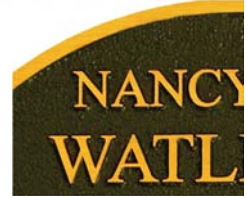


# BACKGROUND COLOUR



The inscription, border and other design features on a cast bronze plaque are raised above the background surface. This background surface is painted or patinated to provide a contrast to the raised elements which are usually lished or polished metallic bronze.



## > Painting Process

The paint used at Phoenix Foundry is a high quality baked enamel sprayed on the plaques in a painting booth. The techniques used are similar to car body painting.

## > Paint Colours

While any colour can be selected, the standard background colour for our plaques is either Phoenix Brown (code XX) or Dark Brown (Code DB). Other colours that are in common use are shown, as cast with a stipple surface texture, on the colour swatch plaque below.

## > Paint Colour Matching

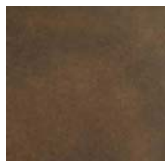
Phoenix foundry can apply any colour. Colours can be identified using the Pantone Matching System (PMS) guide which includes over 3000 colours. Alternatively, if a sample is supplied, we will colour match it for you.

GOLDER YELLOW Code GY	NAVY BLUE Code NB
FERGUSON RED Code FR	CASINO BLUE Code CB
BLACK Code BM	MAROON Code MC
GREY Code GG	BROWN Code XX
TURQUOISE Code TQ	HOLLY GREEN Code HG
DARK BROWN Code DB	DARK GREEN Code DG

## > Patina

Patina is defined as a film or encrustation caused by oxidation of old bronze. In nature this occurs over a long period of time and can result in a variety of interesting colours usually green. With the use of a variety of chemicals and processes carried out in our factory, the outcome can be accelerated and controlled. The process, called patination, can produce an interesting range of patinas giving a more natural appearance to the plaque. They are often selected for historical or artistic work. The most commonly used patinas are Brown and Green but other shades can be achieved on request.

Brown Patina



Green Patina

