

HOW TO EMAIL A COPY OF A PROOF TO YOUR CUSTOMER THAT WAS DESIGNED ON OUR WEB SITE

[Design a new plaque](#) | [Motif Library](#) | [Your Details](#) | [Current Orders](#) | [Saved Proofs](#) | [Search](#)

Plaque Preview. Click to [change](#) <- your design, [order](#) it. Or [save](#) this design for later To RESIZE text in any direction click > RESIZE < then hold down Shift. Draw the line with you To RESCALE text while keeping its proportions click > RESCALE < then hold down Shift+Dr



STEP_01
DESIGN THE PLAQUE (OR EDIT A PREVIOUSLY SAVED PROOF) AND GOTO THE SAVE OPTION.

> Confirm Save

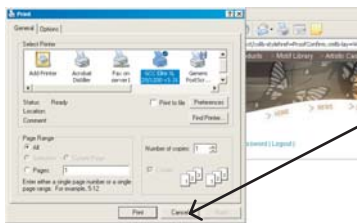
> Please enter a unique name for your proof.
> For example, you could use surname and given names on the plaque or some other unique identifying text.

>

> Quote Required

> Please note: This plaque has not been ordered.
> Clicking the save button above will save your design for you to come back to and either modify or order at a later time. Go to 'Saved Proofs' to select your saved designs.

STEP_02
ENTER A UNIQUE IDENTIFYING TEXT NAME AND SAVE.



STEP_03
CANCEL THE PRINT OPTION.

Your proof has been saved! Please go to "Current Orders" then "Saved Proofs" to continue with this design.
Please note: This plaque has not been ordered! Go to "Saved Proofs", confirm your plaque's design and press "Order" to order this plaque.
Order Details:
Entered On: 8/11/2005 At: 10:57:02 AM
Customer Name: Phoenix Plaque Design
Proof Number: 59558
Proof Name: DONTTEST1-entered-8-11-2005
Plaque Description: JJ-FR135*100
Plaque Name: TEST PLAQUE
Colour: XX
Special Instructions:
You may wish to print this page as a record.
The image below is a representation of what we will endeavour to reproduce as exactly as possible as casting.

STEP_04
RIGHT MOUSE CLICK THE IMAGE AND GO TO EMAIL THIS PICTURE.

